

SSB100 SHOT BLAST CABINET

OWNER'S MANUAL



FOR YOUR SAFETY
PLEASE READ THESE INSTRUCTIONS CAREFULLY
AND RETAIN THEM FOR FUTURE USE.



SPECIFICATION

TOOL MODEL	SSB100
TYPE	BENCH MOUNTED
VOLTS	12V
MIN AIR REQUIREMENT	10 CFM
MIN AIR REQUIREMENT	80-100 PSI

WARNING



Read and understand instructions before use.



Always wear eye/face and hand protection.



Do not use any silica based abrasives with this cabinet. Silica based abrasives have been linked to severe respiratory disease. Always use recommended abrasives. Abrasives used in this unit may be covered by COSHH.

INVENTORY

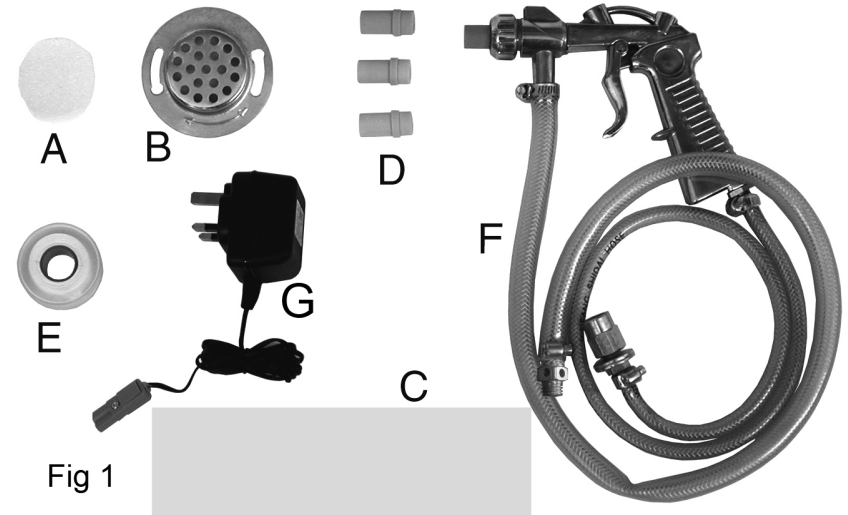


Fig 1

- A - Foam Vent Filter
- B - Air Vent Cover
- C - Spare protective film
- D - Ceramic Nozzles 4, 5, 6 & 7mm (one nozzle is fitted)
- E - PTFE tape
- F - Gun c/w air and pickup hoses
- G - 12V transformer & cable

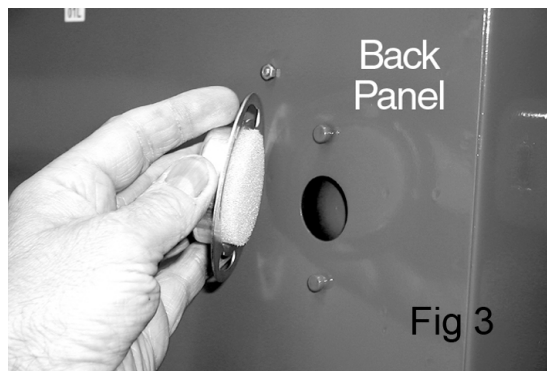
ASSEMBLY

The unit is shipped fully assembled, except for the air vent filter and the gun with attached hoses. First, remove the grid and all the various loose components from within the cabinet.

The end of the air inlet hose, connected to the gun, is inserted through the 16mm dia. hole in the cabinet from the inside, as shown in Fig 2. Ensure a flat washer is threaded on to the adapter as shown.

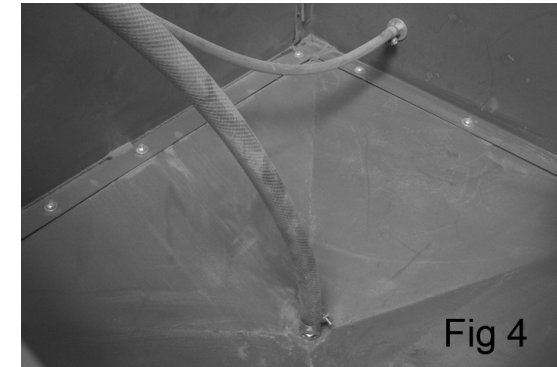


Thread a flat washer, followed by the extended nut, onto the adapter, from the outside of the cabinet, and tighten. Insert the circular foam filter into the recess in the Air Vent Cover, and attach the cover to the rear of the cabinet as shown in Fig 3, having first prised out the plastic bung from the vent hole.



ASSEMBLY

The pick up hose should be attached to the bottom of the cabinet as shown in Fig 4, using the large washer and nut underneath. Replace the grid, ensuring the feet face downwards with the cut away section at the rear of the cabinet.



Finally, connect the air supply to the extended nut shown in Fig 5. Use of the PTFE tape supplied will ensure an airtight seal.

- The air supply should be dry and capable of delivering a minimum of 10 cu ft/min at 100 lbf/in.



OPERATION

Plug the transformer into the power supply and switch the power ON.
Switch the lamp ON by pushing the rocker switch on the switch box 'I'.
Switch OFF by pushing 'O'.

Ensure all air connections are secure, and the pick up is correctly located beneath the grid, before filling the cabinet with abrasive media. Do not fill higher than the level of the grid.

NOTE: PTFE tape is provided which may be used on the threads of the various connectors to ensure an airtight connection. Select the ceramic abrasive nozzle to produce the jet required for the abrasive media being used, and assemble according to the instructions given below.

Place the object to be cleaned in the cabinet, and close the lid, securing with the two swivel clips.

Set the pressure to the required value, but not higher than 100lbf/in², and check to ensure there are no air leaks. Should there be any, turn off the air supply and repair where necessary, before turning the supply back on. Pull the trigger on the gun and proceed to blast the object to be cleaned.

Keep the jet facing the object and away from the clear plastic lid. Do not allow the jet to train on the rubber gloves, the air hose within the cabinet or the fluorescent lamp.

OPERATION OPERATION

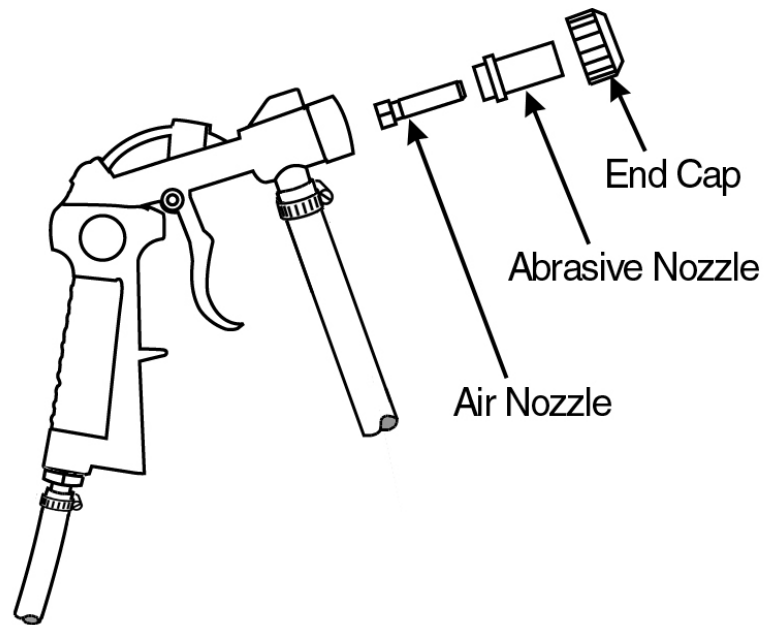
When completed, release the trigger then turn off the air supply. As a precautionary measure, ALWAYS pull the trigger before opening the lid.

There are no hard or fast rules governing nozzle sizes and air pressures used with different abrasives. With experience and experimentation you will quickly learn the best combinations for the required result.

On more delicate parts, start with minimal air pressure to avoid unnecessary peening or excessive abrasion, and work up to a setting to produce the desired finish.

Should any abrasive be spilled, ensure it is cleaned up immediately, as its slippery properties can be hazardous.

REPLACING THE ABRASIVE NOZZLE



Ensure the air supply is disconnected before performing this operation.

1. Pull the trigger of the gun as a precautionary measure.
2. Unscrew the end cap and withdraw the ceramic nozzle.
3. Replace with the nozzle of your choice and carefully thread the end cap back on to the gun, taking great care NOT to cross thread the fine thread.

NOTE: Should it be necessary to change the air nozzle, first remove the abrasive nozzle as described above. A box spanner will be required to unscrew and withdraw the air nozzle.

MAINTENANCE

Before use, check to ensure that all parts are serviceable, including the air inlet hose and rubber gloves.

Ensure the air vent foam filter is in place.

The swivel clamps, securing the lid, must be secure so as not to allow the lid to open during operation. The build up of air pressure within the cabinet could force the lid open, allowing abrasive to escape. This is not only wasteful, but could be a health hazard.

Ensure the filters are serviceable and seated correctly.

Ensure you comply with all precautions regarding the use of compressed air, and air compressor operation.

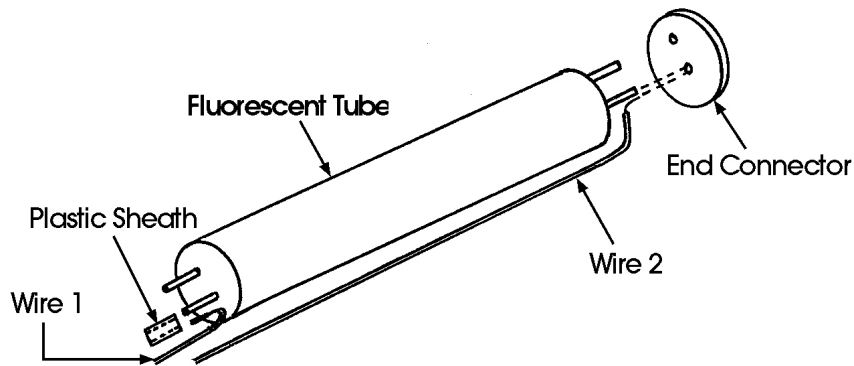
CHANGING THE FLUORESCENT TUBE

Ensure the transformer is disconnected from the power supply before opening the door and cutting the two ties securing the lamp to its retaining clips. Carefully pull the lamp from the retaining clips then hold the clear plastic protective outer tube firmly and ease off the plastic end cover from the nonwired end. (This may take a little persuasion and perseverance). Once the end cover has been removed, hold the end cover at the opposite end (the cable input end), and pull off the outer protective clear plastic tube. The fluorescent tube is now fully revealed.

Pull off the end connector, which secures a wire to one of the pins, taking care not to distort the aluminium reflector. Then pull off the wire secured by a plastic sheath to one of the pins at the cable input end.

Assemble in reverse order, ensuring the wires are correctly held by the plastic sheath at one end and the end connector at the other, with the reflector correctly in position.

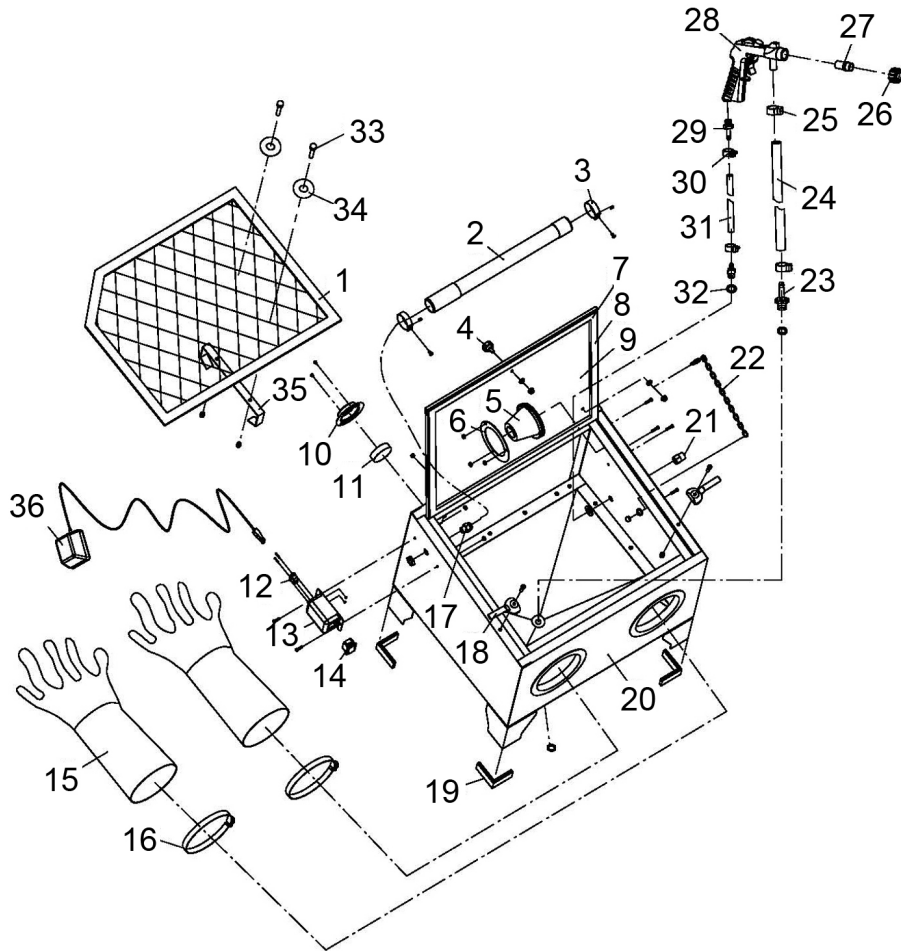
Re-fit the assembly into its retaining clips and test its operation by plugging the transformer into the mains.



TROUBLESHOOTING

Excessive dust in the cabinet.	No dust extract device used.	Install dust extract device.
	Air vent or overflow blocked.	Clean rear vent and keep vent away from any wall.
	Abrasive media worn.	Replace abrasive media
	Too much abrasive media in the cabinet.	Remove excessive media.
	Loose airline or loose connections.	Tighten fittings and ensure airline is secure.
Uneven blasting action	Too much abrasive media in the cabinet.	Remove excessive media.
	Abrasive is damp.	Renew abrasive or dry thoroughly before use.
	Moisture present inside cabinet.	Check airline to ensure it is free from moisture.
Inadequate speed or inefficient blast.	Abrasive media worn.	Replace abrasive media
	Pressure too low.	Increase inlet pressure and ensure control valve is fully open.
Static electricity present	Dry weather conditions.	Leave the item to be cleaned on the grid.
Excessive media blown into the surrounding atmosphere when no vacuum extract is being used.	Lid not secure.	Secure the lid with the swivel clips and adjust them if necessary.
	Air vent filter missing.	Replace filter or blank off hole in rear panel temporarily with masking tape.

PARTS LIST



PARTS LIST

No	DESCRIPTION	PART NO	No	DESCRIPTION	PART NO
1	Steel Screen	902111	19	Feet	902129
2	Fluorescent Tube	902112	20	Cabinet only (no lid)	902130
3	Input Cable Assembly	902113	21	Air Adaptor Nut	902131
4	Knob	902114	22	Lid Retaining Chain	902132
5	Filter	902115	23	Abrasive Pick-up Tube	902133
6	Retaining Disc	902116	24	Abrasive Intake Hose	902134
7	Lid	902117	25	Large Hose Clamp	902135
8	Window Retaining Strip	902118	26	Nozzle Adaptor Nut	902136
9	Protective Film	902119	27	Nozzle (4mm)	902137
10	Air Vent	902120	28	Gun Assembly	902138
11	Foam Filter	902121	29	Air Hose Adaptor	902139
12	Plug Adaptor	902122	30	Small Hose Clamp	902140
13	Cable Transformer Box	902123	31	Air Hose	902141
14	Switch	902124	32	Flat Washer	902142
15	Rubber Gloves (pair)	902125	33	Screw M6 x 15	902143
16	Clamp	902126	34	Flat Washer	902144
17	Cable Clamp	902127	35	Steel Screw Bracket	902145
18	Lid Swivel Clamp	902128	36	Lamp Mains Adaptor	902146



SGS Engineering (UK) Ltd
West Side Park
Raynesway
Derby, DE21 7AZ

EC Declaration of Conformity

This is an important document and should be retained

MANUFACTURER'S NAME: SGS Engineering (UK) Ltd

TYPE OF EQUIPMENT: Shot Blast Cabinet

PART NUMBER: SSB100

APPLICATION OF EC COUNCIL DIRECTIVES / STANDARD:

2004/108/EC	Electromagnetic Compatibility Directive
2006/95/EC	Low Voltage Equipment Directive
2002/95/EC	Restriction of Hazardous Substances

I, the undersigned, hereby declare that the equipment specified above conforms to the above European Communities Directive(s) and Standard(s).

PLACE: Derby, UK

DATE: 24th MAY 2018

A handwritten signature in black ink, appearing to read 'Robert Wyatt', written over a horizontal line.

(Signature)

Robert Wyatt
Company Secretary